

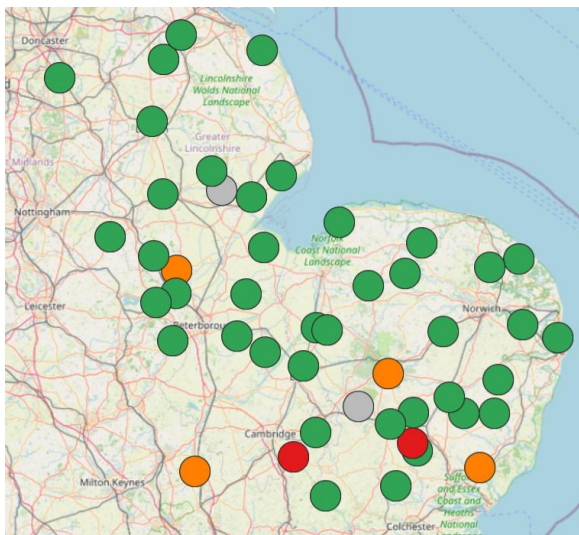


Aphids:

Read BBRO's [Aphicide guidance](#) note as it contains crucial advice for this year

- Aphids have been found at threshold in increasing numbers of fields, please consider spray options carefully. If warm dry weather continues aphid numbers will build quickly leading to potential secondary virus infection across crops.
- Most fields are expected to require a three-spray aphicide programme – BBRO guidance is to follow a programme order of:
 - o **T1: Acetamiprid (InSyst)**
 - o **T2: Flupyradifurone (Sivanto Prime)**
 - o **T3: Fonicamid (Various products e.g. Teppeki)**
- Delaying T1 application where plants are very small may allow canopy expansion and increased aphicide uptake (Delay max. 48-96 hrs)
- **BBRO, British Sugar & NFU Sugar are jointly applying for Emergency Authorisation for an additional application of Acetamiprid (InSyst), in order to create a four-spray programme.** Regardless of the outcome of the EA the spray order recommendation remains the same.
- Check the maps on the BBRO website for latest results in your area – [AphidWatch](#)
- High levels of beneficials have also been reported, please check your crop carefully and take them into consideration when determining risk factors

Do not apply pyrethroid-based insecticides. They do not control our target aphids but will harm beneficial predatory insect populations



AphidWatch map (left) as of 29th April 2026

BBRO's five-point in-season Virus Yellows plan:

1. **Good Hygiene: Limit local VY sources**
2. **Warnings: Check BBRO AphidWatch**
3. **Monitor: Inspect plants for aphids regularly & thoroughly (20 plants per field, 2x week)**
4. **Prepare: Get aphicides on-farm and ready to use**
5. **Spray: When threshold reached and follow BBRO guidance on product order**

Further Information:

Factfiles: [Aphicides 2026](#), [Weed Control](#),
BBRO [CropWatch](#) – Weather Stations & Aphid Mapping
Beet your Best – [Target 4: Weed Control](#)

BeetCast:

[Listen to this month's BeetCast](#)

April's podcast discusses weed control and the proposed SPS agreement and its potential impact on crop protection products.

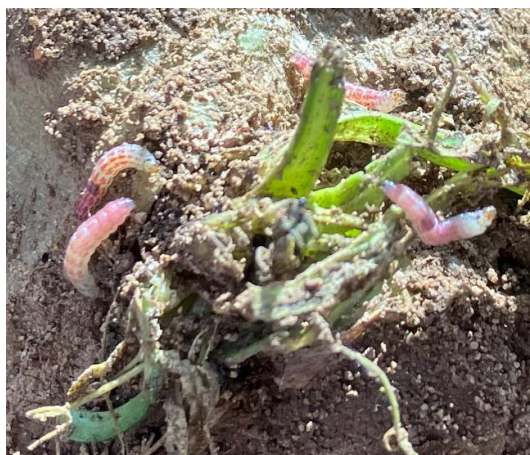


Hygiene:

Urgent attention needed to treat spoil heaps and remove any other root remnants or energy/fodder beet still in the ground. These will increase virus, pest and disease risk. Where you have control ensure these are dealt with appropriately asap.

We have found Beet Moth larvae thriving in crop remnants which could have devastating consequences later in the season if warm dry weather continues.

BBRO, British Sugar and NFU Sugar are in the process of seeking an EA for the use of Coragen for beet moth control.



TARGET TEN: ON-FARM HYGIENE



How will you manage your spoil heaps?

Clear spoil heaps. Avoiding clamping on next year's fields.



Have you got a plan to control groundkeepers?

Destroy re-growth from unrecovered roots with tillage or herbicide.



Is your rotation long enough?

Aim for 4+ years between sugar beet crops to help reduce soil pest pressures including BCN.

British Beet
BBRO
Research Organisation



On Farm Progress:

Most of the sugar beet area has now been drilled, with the remaining growers holding back for rainfall. Windblow, capping and some frost damage can be seen in some crops and may result in poor establishment.

We have also received reports of black-leg, soil pests and grazing damage. Careful consideration should be given to re-drilling, particularly with the VY threat being high and potential poor establishment of re-drilled crop if conditions remain dry. Historic BBRO data suggests this is most justified if your established population is below 50,000 plants/ha. Flea beetle damage and first signs of leaf miner are being reported too.

Plant Clinic:

If you have any concerns with establishment issues get in touch via email plantclinic@bbro.co.uk

CropWatch:

Keep up to date with our monitoring service:

[CropWatch | BBRO](#)

British Beet
BBRO
Research Organisation

BBRO In-field - May 2026

19th May (9:00 or 11:00) - Rauceby, Lincolnshire
20th May (9:00 or 11:00) - Morley, Norfolk
21st May (9:00) - Linton, Cambs

Join us for:
Seasonal crop update
Pest pressures, monitoring and management
Aphicide use, timing and stewardship
Weed control performance
Opportunity to network with BBRO and fellow growers

BASIS and NRoSO points available

Please click below to book a place

[BOOK HERE](#)