



## Hygiene – Hygiene – Hygiene – Hygiene – Hygiene

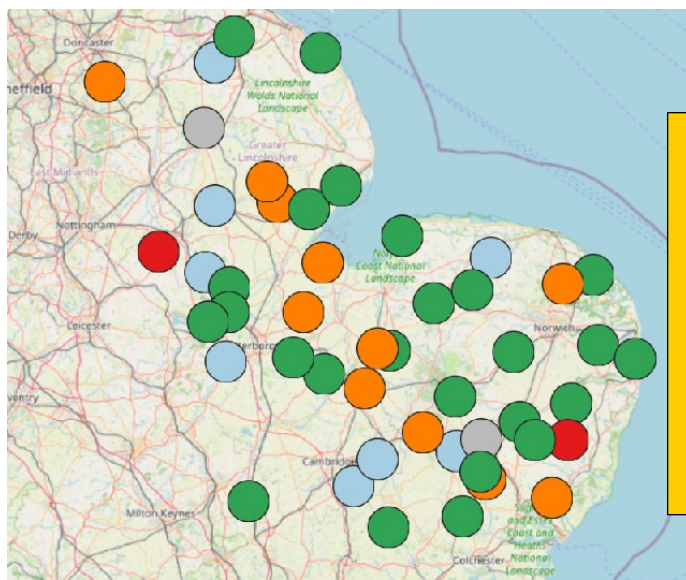
**We cannot say it enough!** Please pay attention to on-farm hygiene. We are finding numerous hot spots for developing diseases, virus and pests, particularly aphids and beet moth. Treat spoil heaps, remove root remnants, check surrounding area for fodder/energy beet still in ground.

### Aphids:

Read BBRO's [Aphicide guidance](#) note as it contains crucial advice for this year

- Aphid migration has slowed due to northerly breeze and cooler temperatures. However, *Myzus persicae* are the predominate species caught in the yellow water pan network, increasing the potential risk of VY infection as and when the weather warms.
- Crops must be checked regularly as sugar beet is more susceptible to VY infection between 4-6 true leaves - if at threshold do not delay treatment
- Many fields are expected to require a three-spray aphicide programme – BBRO guidance is to follow a programme order (for resistance management) of:
  - o **T1: Acetamiprid (InSyst)**
  - o **T2: Flupyradifurone (Sivanto Prime)**
  - o **T3: Fonicamid (Various products e.g. Teppeki)**
- **No update re Emergency Authorisation for fourth spray**
- Check the maps on the BBRO website for latest results in your area – [AphidWatch](#)

Do not apply pyrethroid-based insecticides. They do not control our target aphids but will harm beneficial predatory insect populations



**AphidWatch map (left) as of 14<sup>th</sup> May 2026**

### BBRO's five-point in-season Virus Yellows plan:

1. **Good Hygiene: Limit local VY sources**
2. **Warnings: Check BBRO AphidWatch**
3. **Monitor: Inspect plants for aphids regularly & thoroughly (20 plants per field, 2x week)**
4. **Prepare: Get aphicides on-farm and ready to use**
5. **Spray: When threshold reached and follow BBRO guidance on product order**

### Further Information:

Factfiles:

[Aphicides 2026](#), [Weed Control](#),  
BBRO [CropWatch](#) – Weather Stations & Aphid Mapping

### BeetCast:

[Listen to this month's BeetCast](#)

April's podcast discusses weed control and the proposed SPS agreement and its potential impact on crop protection products.



**Weed Control:**

Post-emergence herbicides are being applied across the area but with mixed plant maturity within field, weed control decisions have been difficult, especially as weeds toughen and become more waxy.

Careful consideration required re use of adjuvant oils and also attention to detail required with application, especially nozzle choice where weeds are still small.

**Pests:**

We are receiving reports of high levels of flea beetle damage, with signs of ‘shot-holing’ and stunted growth. Evidence of thrips damage has been reported too. Whilst pyrethroids will have affect they will also take out any beneficials at this crucial time and increase risk of virus yellows infection. Growers are urged to wait as the crop should grow away from the damage.

The early dry, hot weather has favoured **beet moth** to fly. Especially in areas previously affected, e.g. there are clear hotspots developing around the A14 – A11 corridor. We are monitoring the situation with our new Smart Moth Traps which take daily images of moth activity, helping to build information of its life cycle.

**CropWatch:**

Keep up to date with our monitoring service: [CropWatch | BBRO](#)

**General:**

With another dry spring we are seeing poor emergence and patchy crops being visible across the growing region. Whilst field conditions have been hampered by the weather, now is the time to reflect on the impact of cultivations. Land that was ploughed late has dried out, whilst those cultivated in the autumn have fared better. Check what has worked on your own land in order to improve cultivations for next year.


**Events:**




Don't forget to book your place at one of next week's in-field events. [265demofarm](#)  
Hope to see you there.



**BASIS Points**

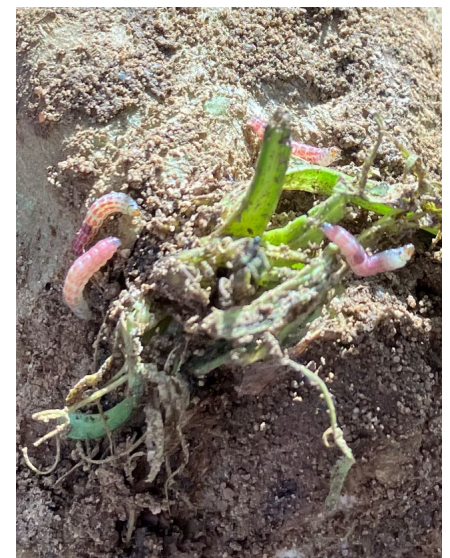
BASIS are currently unable to process points for publications on their new system. In order to claim CPD Points, please email [cpd@basis-reg.co.uk](mailto:cpd@basis-reg.co.uk) with number below and your details.

**TARGET FOUR:**  
WEEDS



-  Do you need a pre-emergence herbicide?  
*Apply pre-emergence herbicides when conditions are optimal but avoid on high OM soils and in very dry years.*
-  Have you got an understanding of the weed spectrum in your sugar beet crop(s)?  
*Tailor weed control relevant to your farm and weed pressure. Ensure regular applications where necessary to maximise control.*
-  Do you have a plan for adapting your herbicide applications?  
*Avoid spraying under intense sunlight or when daily temperatures are high. Consider size of crop. Adjust adjuvants based on crop stress.*

British Beet **BBRO**  



British Beet **BBRO**  **BBRO In-field - May 2026**

19th May (9:00 or 11:00) - Rauceby, Lincolnshire  
20th May (9:00 or 11:00) - Morley, Norfolk  
21st May (9:00) - Linton, Cambs

Join us for:

- Seasonal crop update
- Pest pressures, monitoring and management
- Aphicide use, timing and stewardship
- Weed control performance
- Opportunity to network with BBRO and fellow growers

BASIS and NRoSO points available

Please click below to book a place

[BOOK HERE](#)

